



Message from Paul Snape, our CEO

Firstly, a huge thank you to everyone who got involved with Paint The City Pink throughout September - together, we raised an incredible £11,000! It was truly heartwarming to see our community and Wolverhampton businesses come together in a wave of pink fun, all in support of our young people.

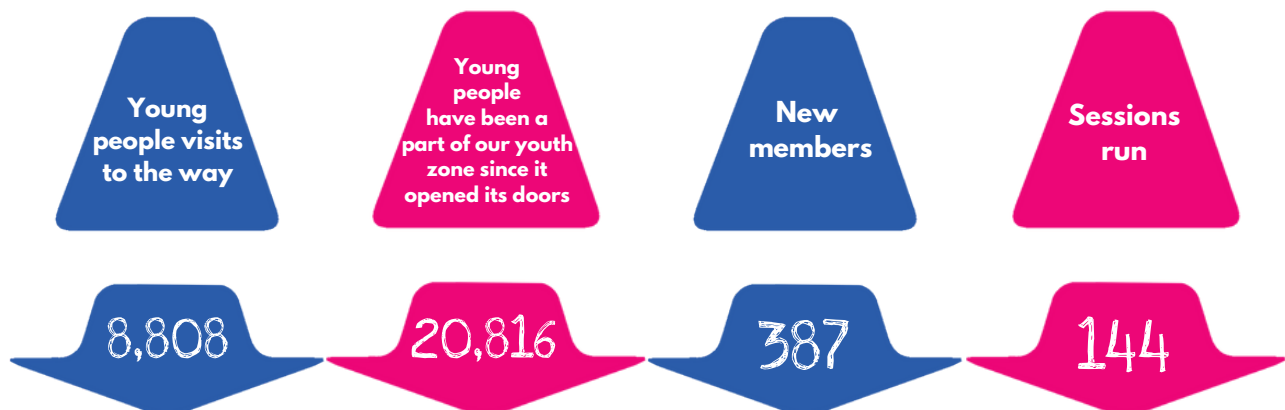
As we move into November, I want to shine a light on our Outreach team, who are out in the city most weekday evenings, engaging with young people and running our walking bus between the bus station and our Youth Zone - helping ensure safe and supported access to our space.

Looking ahead, we're thrilled to be part of The Big Give campaign starting Monday 2nd December, where every donation made during that week will be doubled - a powerful opportunity to make an even greater impact.

And as we approach our 10th birthday in January, we're busy planning some exciting celebrations throughout 2026 - we can't wait to share them with you!

Wishing you all a warm, peaceful, and joyful festive season. Thank you for being part of our journey.

How are we doing? Jul - Sep 25



Chess Club Takes on Parliament!

Earlier this month, our Chess Club had an unforgettable experience – a special tournament at the Houses of Parliament against the Parliamentary Chess Club!

While the final score was 10–6 to the Parliamentary team, our young people played brilliantly and showed incredible sportsmanship. One MP even said we were “one of the politest and nicest chess clubs they’ve played” – what a compliment!

Huge thanks to Warinder Juss MP for making this happen. The day included a tour of Parliament and a chance to sit in the Commons Chamber gallery during Prime Minister’s Questions – with the unexpected highlight of seeing the Prime Minister tying his shoelaces!

We’re so proud of our young people for representing The Way so well.



Slip 'n Slide Fun!

At the end of summer, we introduced a brand-new inflatable Slip 'n Slide – and it was a massive hit!

Families and young people loved it during our Family Fun Afternoon and Holiday Club sessions. We’re already looking forward to spring, when the Slip 'n Slide will be back on the MUGA for more splash-filled fun!

Level Up Saturdays - Basketball for Ages 16-25

Basketball is one of our most loved sports, and now we’ve created a space just for older members!

Level Up Saturdays run from 5–7pm, offering 2 hours of pure basketball – no drills, no coaches, just great games and good vibes.

Open to anyone aged 16–25, no membership needed, and just £1 entry.





Our Minibus is getting a Makeover!

Thanks to our amazing patron WCC (Wednesbury Car and Commercial), our minibus is getting a bold new look!

While the wrap was being applied, WCC kindly invited some of our senior members to their workshop to get hands-on experience and learn how vehicle wraps are professionally installed — a brilliant opportunity to see the process up close and gain some practical insight!

The new design features the famous pink of our youth work hoodies, the blue of our young leaders, the yellow of our logo, and the green of our SEND Squad, all coming together in a vibrant, eye-catching look we can't wait to show off around the city.

A huge thank you to WCC for being such an awesome patron and part of The Way Family!!

Keep an eye on our social media for the big reveal — coming soon!



Jiu Jitsu Fridays

Every Friday during Seniors (6:00–8:00pm), we offer Jiu Jitsu sessions delivered by Reel Grappling.

Perfect for beginners – come along and give it a try!



Outreach Team Supporting Young People Across the City

As the nights get darker and colder, our new Outreach Team is out in the community, engaging with young people and encouraging them to visit The Way.

You'll spot Scott, Brandon, and Tia in their bright pink hoodies, building relationships and offering a safe, positive alternative to spending time on the streets.



Walking Bus Service

We've launched a Walking Bus Service to help young people travel safely between Wolverhampton Bus Station and The Way Youth Zone.

It's free, and gives peace of mind to parents and carers.

Schedule:

- Monday & Wednesday: Walk back to the bus station at 8:30pm
- Friday: Pick-up from bus station at 4:00pm and walk back at 8:30pm

Our team will accompany young people on foot, making sure they feel safe and supported.



TheWay2Work - Building Futures Together

We're excited to introduce our new Employability Coordinator, Germaine Bowen-Smith who will be taking our new employability programme forward in partnership with NIS Group.

For ages 8–12:

Fun, hands-on activities focused on confidence, teamwork, and discovering strengths.

For ages 13–18 (or up to 25 with additional needs):

- STEM workshops in engineering, construction & trades
- Soft skills training (communication, teamwork, problem-solving)
- Mentoring from industry professionals
- Career fairs, job placements & apprenticeship opportunities

Germaine will be working with our young people to help them explore career paths and gain the confidence they need to thrive in the future.



The Way Wonderland is back!!



Back for it's third year - we will be opening our doors to the community once again and providing festive fun for the whole family!

Once again, there will be a Santa's Grotto, festive music from the Black Country Brass Band and lots of activities to get you into the Christmas spirit!

Saturday 6th December
11:00am - 3:00pm

Wolverhampton Went Pink - And Raised Over £11,000 for Young People!

This September, Wolverhampton turned a fabulous shade of pink as The Way Youth Zone launched its very first Paint The City Pink campaign – and thanks to the incredible support from families, young people, staff, and local organisations, we raised an amazing £11,334 to support young people across the city!

From pink outfits and epic endurance walks to raffles and running events, the whole community came together to make a difference. It was a month full of fun, fundraising, and feel-good moments.

Highlights from the Month:

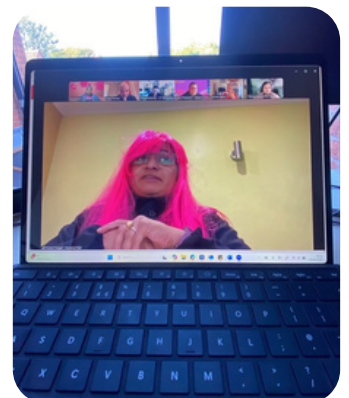
- **Wolverhampton Half Marathon & 10K Run** – Youth Zone staff and parents hit the streets to raise funds and awareness.
- **Safran Golf Day** – Over 20 teams teed off in a friendly tournament for a great cause.
- **Gough Group Family Day** – A celebration of 125 years with generous donations throughout.
- **Thomas Telford School Pupils** – Students from the NEST project led their own fundraising efforts.
- **BNI Achievers' Pop of Pink Day** – Members donated £1 to wear pink to work.
- **Nationwide Building Society** – Staff wore pink every Wednesday and ran a raffle for customers.
- **Taylor Woodrow's Ultra Challenge** – A team walked an incredible 100km from Putney Bridge to Henley-on-Thames!
- **Online Donations** – Supporters from across Wolverhampton chipped in with generous gifts.

Paint
The City
PINK
September 2025



We're so thankful for all the support! The money raised will help us run a whole year of creative and fun activities for young people — like art, sports, cooking, music, wellbeing workshops, and more.

A big thank you to everyone who joined in, donated, or cheered us on. You've helped make a real difference!



Get ready for the Big Give this December

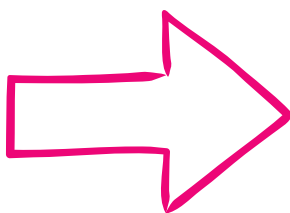
We're excited to be part of this year's Big Give Christmas Challenge, running from 2nd–9th December, with a goal to raise £40,000 to make Christmas at The Way Youth Zone truly magical for our young people and families.

**Christmas
Challenge**

BigGive

HOW IT WORKS

**You make a
donation**



**The Big Give
doubles your
donation**

Here's how it works: Every time someone donates online during campaign week (2nd - 9th December), the donation is doubled thanks to our Big Give Champion, the Scouloudi Foundation and one of our Founder Patrons.

That means if you give £10, it turns into £20 for our charity!

The matching money is added bit by bit as people donate, so every gift helps us reach our goal and unlock more support.

All the money raised will help us run fun and affordable Christmas activities for young people and families throughout December — like our Festive Fayre, Christmas parties and more. We know Christmas can be expensive and we want everyone to enjoy it, no matter what.

One donation, double the difference — let's make this Christmas one to remember!

**Together This
Christmas**
2nd - 9th December

One Donation **Double the
difference**

THEWAY
An OnSide Youth Zone

**Christmas
Challenge**
BigGive

Welcome to our new Patrons!!!



We're thrilled to welcome three fantastic new patrons to The Way family: Provectus, Gambit Insurance Solutions, and The National Energy Hub.



These brilliant organisations have joined us to support our mission of empowering young people across Wolverhampton. Their backing means even more opportunities, activities, and support for the children, teens, and families who rely on The Way.

We're so grateful for their belief in what we do — and we're excited to work together to make an even bigger impact in our community.



Thank you, Provectus, Gambit Insurance Solutions, and The National Energy Hub — we're so glad to have you on board!

Keep up to date with
our Youth Zone



@thewayyouthzone



www.thewayyouthzone.org



@theway_youthzone

Contact us



01902 328290



info@thewayyouthzone.org



07399 355389

Cadent

Your Gas Network

Cadent Gas PSR

Do you have children under 5 yrs?

Do you have a disability?

Do you have anxiety, depression or
any mental health condition?

You could be eligible to sign up for the Priority Services Register. This is a completely free service, designed to make it easier for those who need a little extra help in the event of a power cut.

Benefits include providing you with alternative heating and cooking facilities should your gas supply be interrupted and providing welfare in the form of meals, drinks, warmth and charging points if there is a power cut.